

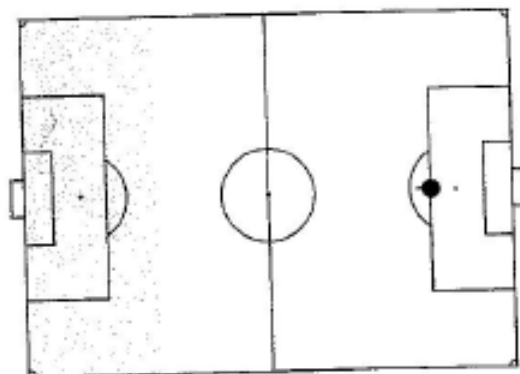
10 GAME SITUATIONS

To illustrate Positional Play

NB: The distances outlined are maximum and minimum requirements and should be related to the age, experience and ability of the goalkeeper.



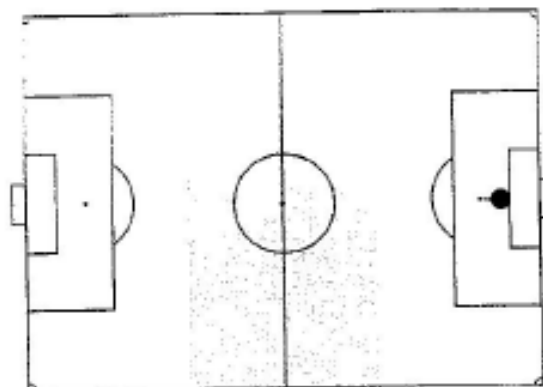
59



1. If ball is in attacking-third of field:
Goalkeeper should be 12-18 yards off line, 30-40 yards from rear most defender.
Central position.



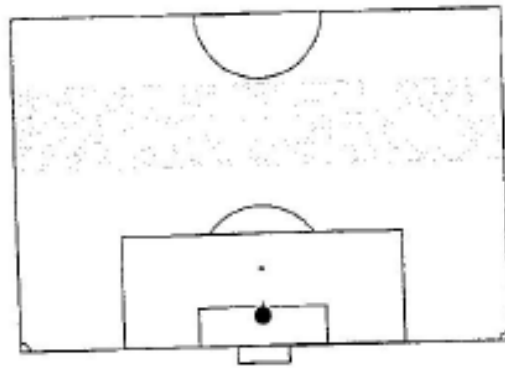
60



2. If ball is in mid-third of field:
Goalkeeper should be 6-12 yards off line.
Central position.



61

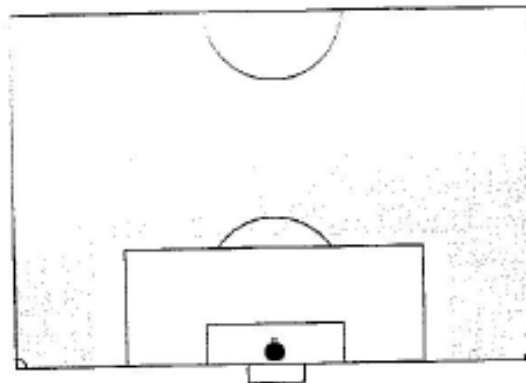


3. If ball is 30-40 yards from goal:
 Goalkeeper should be 3-6 yards off line.
 Central position.

Tip: Avoid advanced positions if ball is bouncing, since it makes it easier to "lob" the goalkeeper.



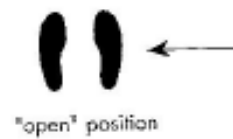
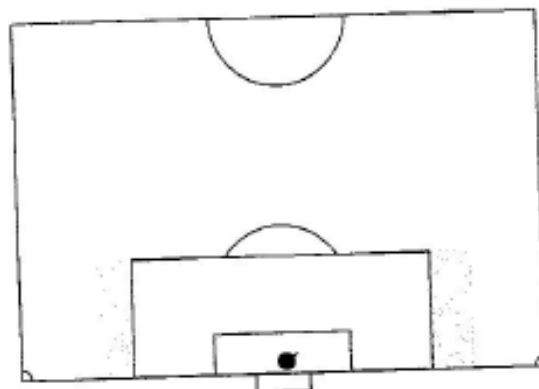
62



4. If ball is 20-30 yards from goal:
 Goalkeeper should be 1-3 yards off line.
 Central position.



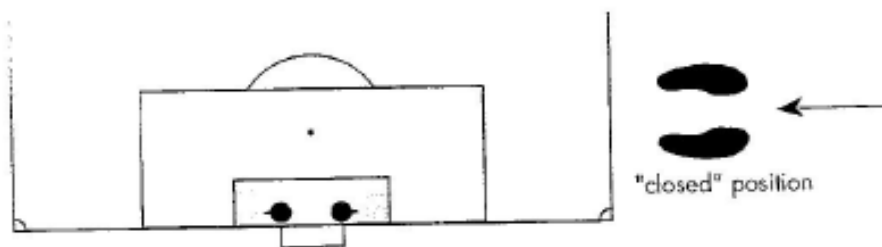
63



5. If ball is on side of penalty area:
 Goalkeeper should be 1-2 yards off line.
 "Open" position 3 yards from post near ball.



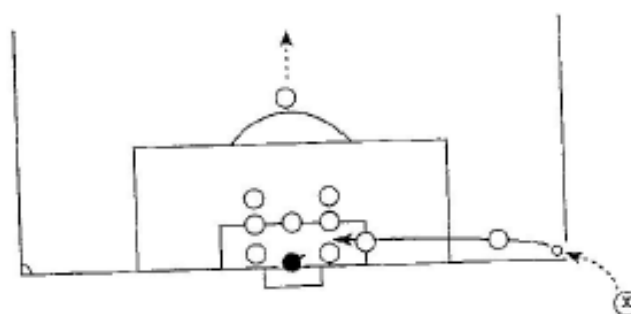
64



6. If ball is near goal line and 6 yards from goal:
 Goalkeeper should be on line at near post to ball, slightly in front of the post.
 "Closed" position to ball.



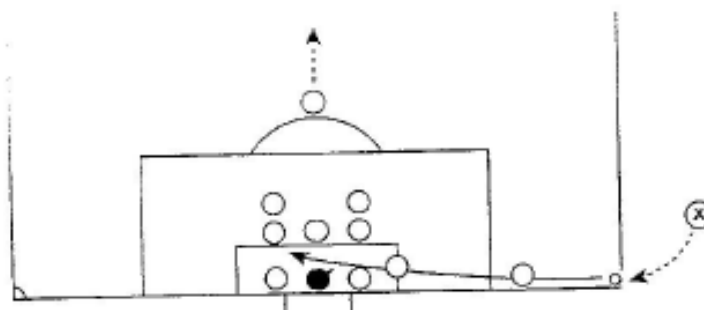
65



7. Corner kick inswinger, i.e., ball kicked in toward the goal
- Goalkeeper stands 3-4 yards from near post.
 - Relatively open position on goal line.
 - "Triangle of cover" with defenders close to near and far posts.
 - Remaining players in zonal/man-marking positions.



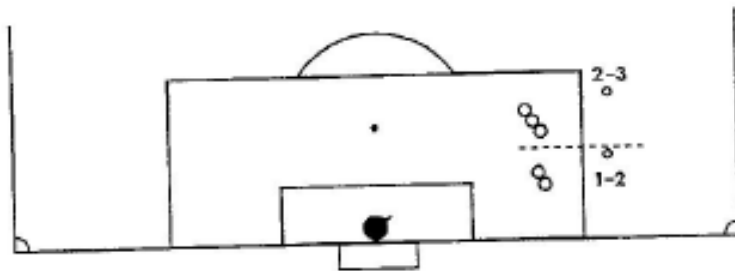
66



8. Corner kick outswinger, i.e., ball kicked away from goal
- Goalkeeper stands 3-4 yards from far post.
 - Relatively open position 1-2 yards from goal line.
 - Triangle of cover with defenders stationed at near and far posts.
 - Remaining players in zonal/man-marking positions.



67



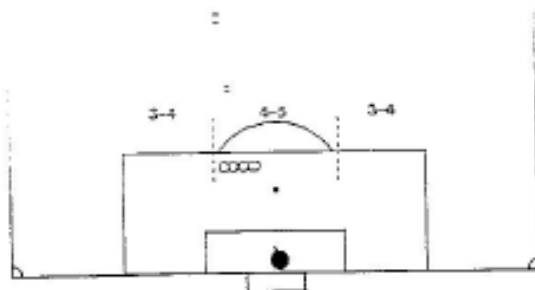
9. Free kicks on side of penalty area

Goalkeeper:

- Controls number of defenders in wall, i.e., 1-2 defenders in bottom half of penalty area, 2-3 defenders in top-half of penalty area.
- Lines up end player in wall with post and ball.
- Ensures remaining attackers are marked.
- Adopts mid-goal position 1-2 yards from goal line, depending on type of kick; "open position".



68



10. Free kicks at top of the penalty area

Goalkeeper:

- Controls number of defenders in wall, based on position of ball.
- Instructs one outfield player to line up end players in wall. NB: This player must be 10 yards behind ball.
- Checks wall and that other attackers are marked.
- Adopts position in line with end of wall and clear view of ball, not more than 2 yards from mid-goal position, i.e., 6 yards from either post.



69